

The logo for work2future is set against a dark blue circular background with a torn-edge effect. The text "work2future" is in a white, lowercase, sans-serif font, with a small "SM" trademark symbol to the right. Below it, the words "opportunity • jobs • success" are written in a smaller, white, lowercase font, separated by small white dots.

work2futureSM
opportunity • jobs • success

SJCC & Work2Future Virtual Job Fair

Current (11 AM to 1
PM):

- Construction
- Manufacturing

Please keep your audio
and camera off.

Please direct all
questions to the Q&A
box.

Thank you!

The logo for San Jose City College is a purple circle with a subtle floral pattern. On the left side, the words "SAN JOSE CITY COLLEGE" are written vertically in a white, uppercase, sans-serif font. To the right of this text are the letters "SJCC" in a large, bold, yellow, stylized font.

SAN JOSE CITY COLLEGE

SJCC

A sign on a wooden post is set against a dark brown circular background with a torn-edge effect. The word "Virtual" is written in a red, cursive font at the top left. Below it, the words "CAREER FAIR" are written in a white, uppercase, sans-serif font inside a black rectangular box with a white border.

Virtual
CAREER
FAIR



BrightView Landscape

(Landscape Maintenance Division)

Rebecca Sandoval
BrightView Recruiter



Landscape Services

Enjoy seeing your creations and your career grow. From landscaper, crew leader and beyond, the opportunities for advancement are endless.

Landscape Maintenance Division



Water Management Services

Be on the cutting edge of water management. Working with the latest technology, you'll create meaningful solutions for clients and a gratifying path for career development.



Construction Services

You make it happen. From concrete to landscape, irrigation, masonry and more, you're at the heart of every project. We offer rewarding paths for all trades, advancing to foreman and beyond.



Tree Care Services

You'll climb to new heights as a member of our tree care services team. From tree health management and maintenance, to preservation and removal, your valuable, specialized skills will open new doors for your career.



Inspiring People. Nurturing Landscapes.

Positions Maintenance

Hourly Team Members:

- Landscaper 1, 2, 3, Enhancement Laborer 1, 2, 3, & Grounds man

Hourly Team Leaders:

- Landscaping Crew Leader, Enhancement Crew Leader, Tree Climber, Tree Care Crew Leader, Spray Technician, Irrigation Tech

Professional:

- Associate Production Manager, Production Manager, Account Manager, Senior Account Manager, Business Developer, Associate Branch Manager, Branch Manager, VPGM

Benefits



You're going places, let us help you get there! At BrightView, we don't just encourage you to think about your future, we ask how we can support it.

In addition to supporting your career ambitions, we also support your well-being with a benefits package that includes competitive medical, dental and vision benefits, our employer matched 401(k) plan, and more.

See what shape your path might take as a part of our team!



Benefits *(Continued)*

Team Members *(Most benefits available after 30 days)*

- Health, Dental, & Vision Plan
- Paid Time Off *(Leader Positions Only)*
- 6 Paid Holidays
- 6 Paid Sick Days *(Available after 90 days)*
- 401K Retirement Plan
- Employment Assistance Program (EAP)
- Tuition Reimbursement *(Available after 1st year anniversary)*
- Employee Stock Purchase Plan (ESPP)
- And Many More!
- Paid Weekly (Fridays)
- Monday - Friday Schedule



THANK YOU





CONSTRUCTION™



About XL - Then and Now

1992

- Eric and Dave start XL Construction
- Focused on excelling on every project
- Committed to complete customer satisfaction



XL CONSTRUCTION

2021

- A Top Northern CA Commercial Contractor
- Headquartered in Silicon Valley (Milpitas)
- 2 Regional Offices - Sacramento and Oakland

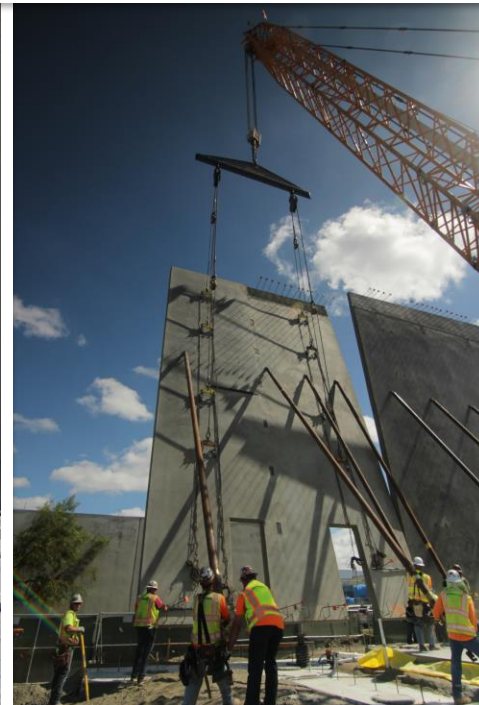


X **L** CONSTRUCTION™

Elevated (SPW) and Bradley Concrete

Established 2012

- Synergy with XL GC
- 2019 Project Revenue \$52 Million
- Provides concrete work to other GC's



Diversified Current and Future Projects

What **YOU** could be working on!

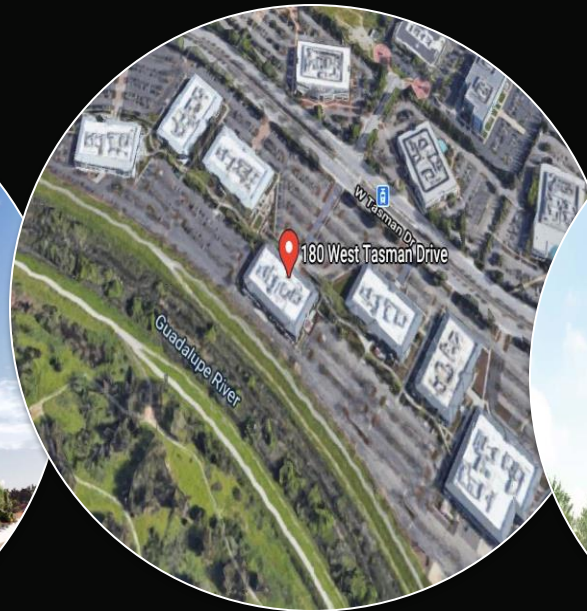


Education

Randall
Elementary School
(Ground-up)



Science + Technology
Manufacturing Facility
(Ground-up) For BioTech
Client



Civic

County of
Santa Clara
Tasman 2



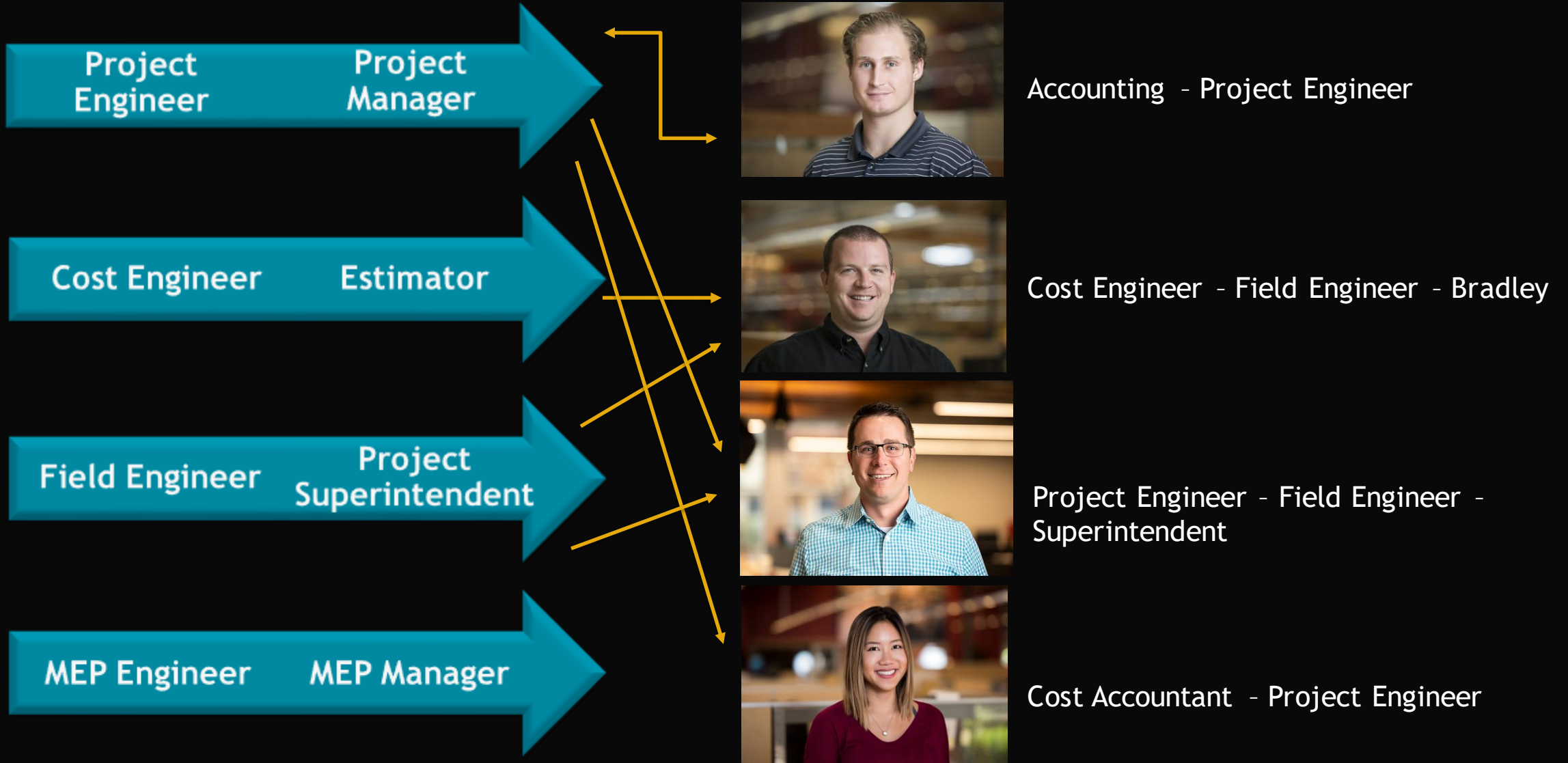
Corporate Office
5 Story Bldg
For Tech Client



Healthcare

Behavioral Health
Services Center
(Ground-up)

Career Paths



What is **Culture**?

“the set of shared attitudes, values, goals, and practices that characterizes an institution or organization.”

~ Merriam-Webster

XL's Core Values:

Go
Beyond



We
Not
ME



Be True

Approximately 600+ people

Thank you!



Having Fun & Building Relationships

- ✓ Xlebrate/Summer Schedule
- ✓ Bocce and Cornhole Tournaments
- ✓ Annual Picnic
- ✓ Fun Day & Golf Tournament
- ✓ Shop Party
- ✓ Holiday Party
- ✓ Annual Ski Trip
- ✓ Camping Trip
- ✓ Fit Camp Classes
- ✓ XL Softball & Soccer teams



Community Engagement

- Work toward sustainable improvements to the community
- Generate widespread employee engagement
- Encourage “Day of Service” and participation in local communities



Corporate: HomeFirst Restroom Restoration



Business Unit: Lighthouse for the Blind



Individual: Ducks Unlimited Wetland Habitat Conservation, Gilroy Chapter

Career Opportunities

Full Time Opportunities Starting Summer 2021:

Associate Project Engineer (\$60k- \$65k)

- Associate degree in Construction Management, Engineering, or equivalent combination of education and experience.
- Fundamental knowledge of basic construction materials and methods
- Understanding of the technical and business aspects of construction project management.
- Ability to read and understand drawings and project specifications
- Strong interpersonal communication skills
- Acts in a manner of integrity that shows support for the company, its values, and the employees, while maintaining constant focus on meeting or exceeding customer requirements and expectations.

Career Opportunities

Full Time Opportunities Starting Summer 2021:

Associate Field Engineer (\$60k- \$65k)

- Associate degree in Construction Management, Engineering, or equivalent combination of education and experience.
- Fundamental knowledge of basic construction materials and methods
- Supports the Project Superintendent in managing the field operations of a project.
- Participate in performing basic surveying, layout and field measurements - determine lines, corners, elevations, grades, alignments, angles, positions and distances.
- Build and maintain good working relationships with all owners, subcontractors, owners' reps, architects, engineers and inspectors assigned to the project.
- Always promotes the highest level of professionalism and ethics.

If you are interested in applying,
please send email to:

Gboneso@Xlconstruction.com

Q & A

UTILIQUEST





**Know what's below.
Call before you dig.**



SUCCEED

UtiliQuest Offers a Comprehensive Benefits Package.

Benefits Include:

- Group Medical, Dental, and Vision Insurance (customized per employee)
- 401(K) (matching contributions made each week)
- Life Insurance (company-paid and supplemental available)
- Short Term & Long Term Disability
- Tuition Reimbursement
- Holiday Pay
- Premium Pay for On-Call work

[Apply Now](#)



www.utiliquest.com/careers

The logo for work2future is displayed on a dark blue circular background with a torn paper edge. The text "work2future" is in white, with a small "SM" trademark symbol. Below it, the words "opportunity • jobs • success" are written in a smaller white font.

work2futureSM
opportunity • jobs • success

SJCC & Work2Future Virtual Job Fair

~5 Minute Break~

Please keep your
audio and camera off.
Please direct all
questions to the Q&A
box.

Thank you!

A wooden signpost with a black sign that says "Virtual CAREER FAIR". The word "Virtual" is written in red cursive above the sign. The sign is set against a blurred background of a fair.

Virtual
CAREER
FAIR

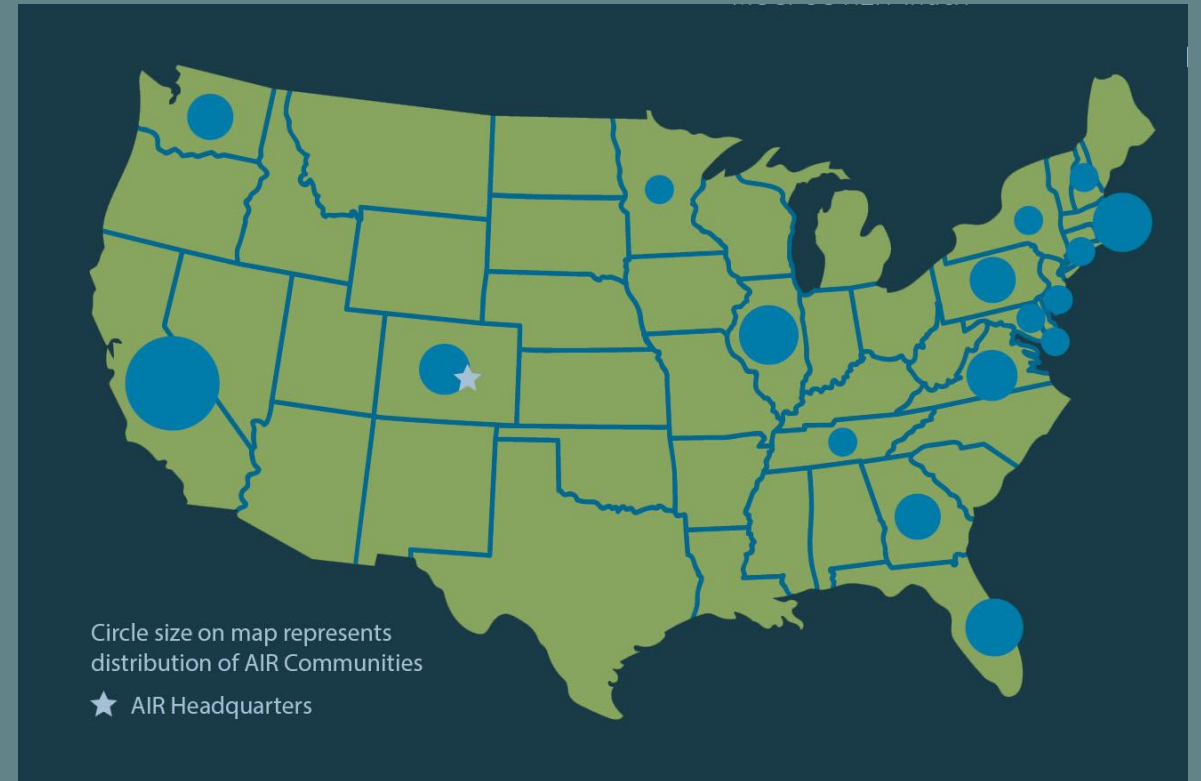
The logo for San Jose City College is on a purple circular background with a floral pattern. It features the text "SANJOSECITYCOLLEGE" in white, oriented vertically on the left, and the large yellow letters "SJCC" in the center.

SANJOSECITYCOLLEGE
SJCC

AIR COMMUNITIES-WHO WE ARE



- We are a publicly traded Real Estate Investment Trust (REIT), who has, for more than 25 years, built its business around a relentless focus on our customer and our award-winning culture.
- We own and operate quality apartment homes in 15 states, and the District of Columbia.



OUR TEAMMATES

- Our communities are managed by outstanding, tenured team members who provide exceptional customer service.
- We believe in building community and provide our team members with 15 paid hours per year to volunteer for causes close to their heart.



OUR TEAMMATES



**TOP
WORK
PLACES
2020**

THE DENVER POST
8 YEARS RUNNING!



**TOP
WORK
PLACES
2018**

**BayArea
NewsGroup**



OUR CULTURAL PILLARS



We are committed to our Mission, Vision, and Values.

“
Our Mission
To consistently provide **quality** apartment homes in a **respectful** environment delivered by a team of **people who care**.

The graphic features a dark teal background with a white speech bubble shape containing the text. The background is decorated with abstract, overlapping circles in shades of teal and white.

“
Our Vision
To be the **best** owner and operator of apartment communities, inspired by a talented team **committed** to **exceptional** customer service, strong financial performance, and **outstanding** corporate citizenship.

The graphic features a dark teal background with a white speech bubble shape containing the text. The background is decorated with abstract, overlapping circles in shades of teal and white.

“
Our Values
**Integrity, Respect,
Collaboration,
Customer Focus,
Performance Culture.**

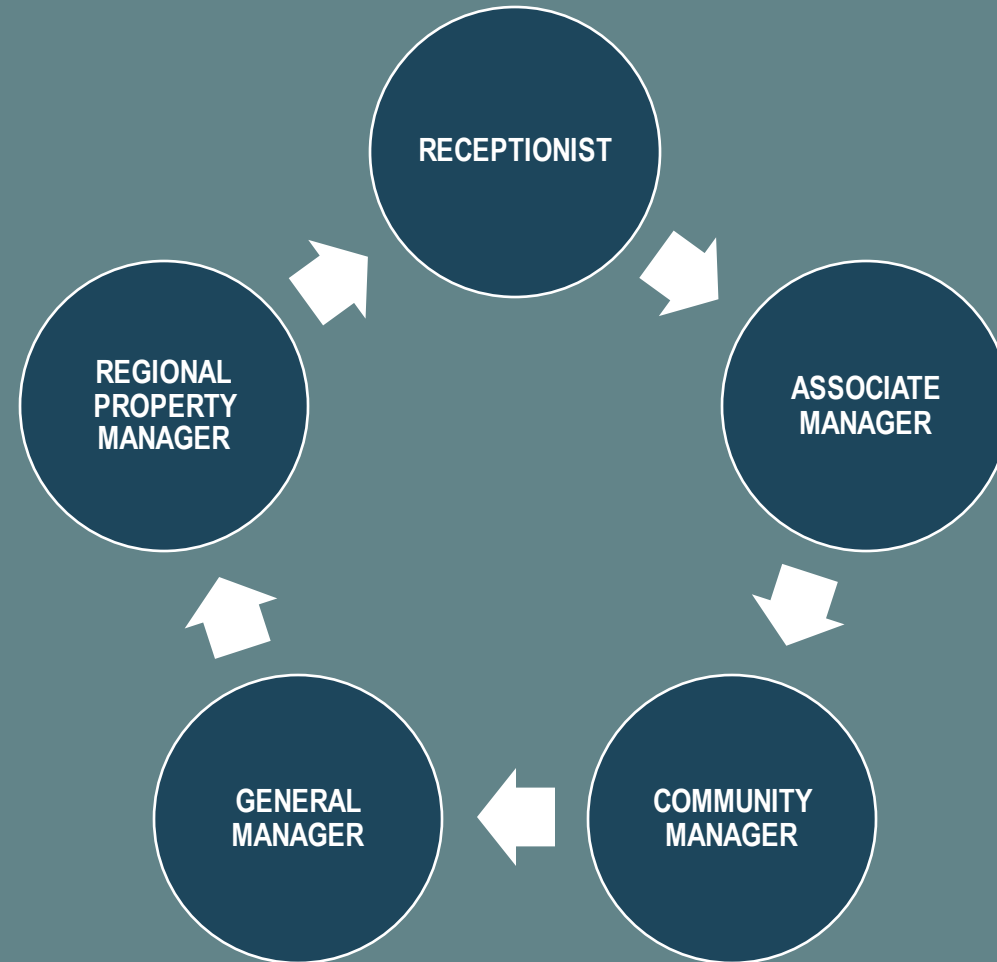
The graphic features a dark teal background with a white speech bubble shape containing the text. The background is decorated with abstract, overlapping circles in shades of teal and white.

EXAMPLE: LEASING CONSULTANT CAREER PATH



AIR Communities prides itself on promoting from within.

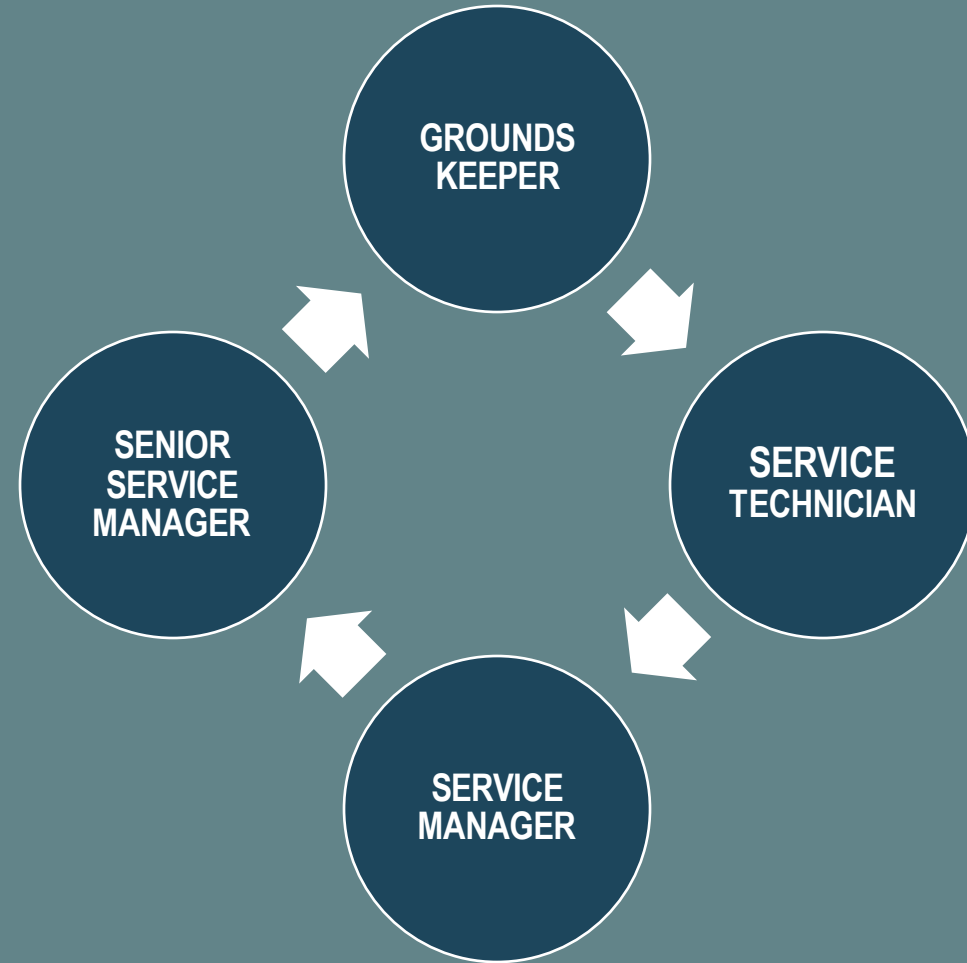
We love seeing our team members flourish and encourage them to take advantage of our jungle-gym culture, meaning that growth and opportunity is not a straight up and down ladder, but can include lateral and vertical movements.



EXAMPLE: SERVICE TECH CAREER PATH

AIR Communities prides itself on promoting from within.

We love seeing our team members flourish and encourage them to take advantage of our jungle-gym culture, meaning that growth and opportunity is not a straight up and down ladder, but can include lateral and vertical movements.



TOTAL REWARDS



Our team members take care of us, and we take care of them. We offer a range of benefits to strengthen your health and well-being, including:

BENEFITS & PERKS	
Health Insurance	Paid Holiday, Vacation, and Sick Time
Dental & Vision Insurance	Tuition Reimbursement
Life, Short-Term and Long-Term Disability Insurance	Employee Stock Purchase Discount
401(k) match	Team Member Recognition Program
Parental Leave Program	15 paid hours to volunteer annually
Pet Insurance	Employee Assistance Program

PLEASE REACH OUT WITH YOUR QUESTIONS



Visit us at [AIR Communities/Careers](https://aircommunities.com/careers)



EMAIL:

Teri.Hallinan@aircommunities.com



Interview Link:

<https://calendly.com/teri-hallinan/30min>





CONTACT:

KYLE GODFREY

KGODFREY@MCNEAL.COM

408.468.6312

Company Overview

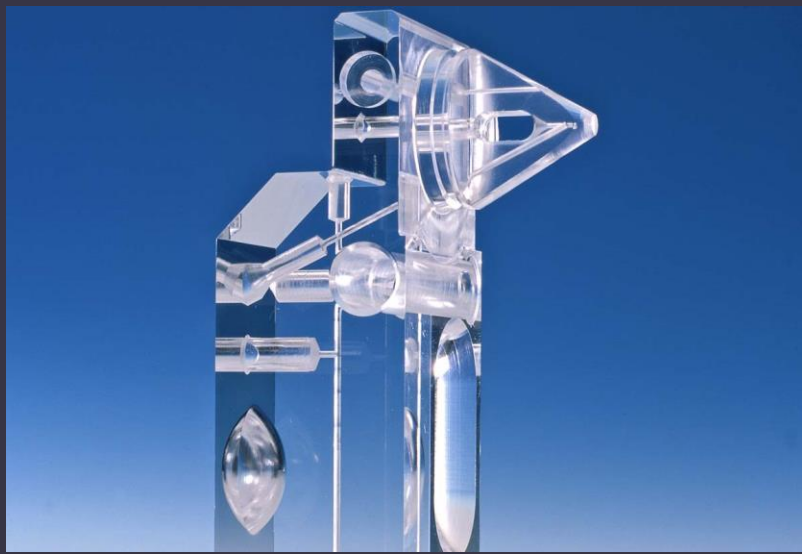
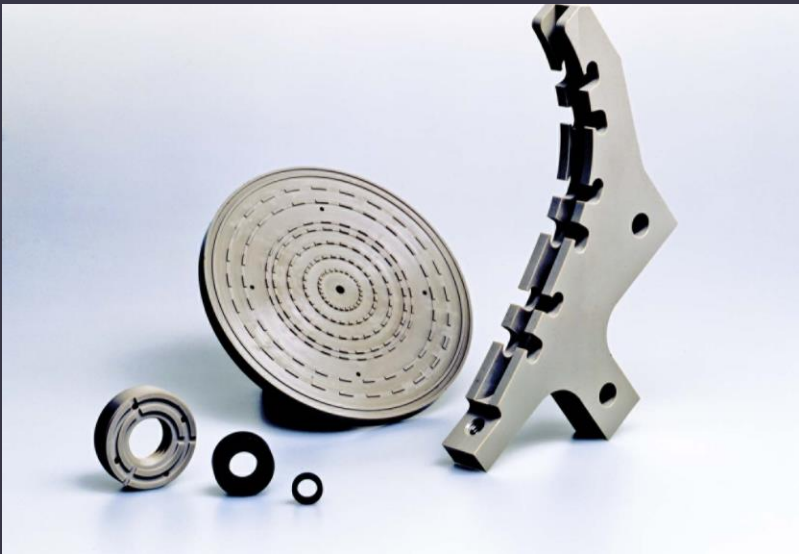
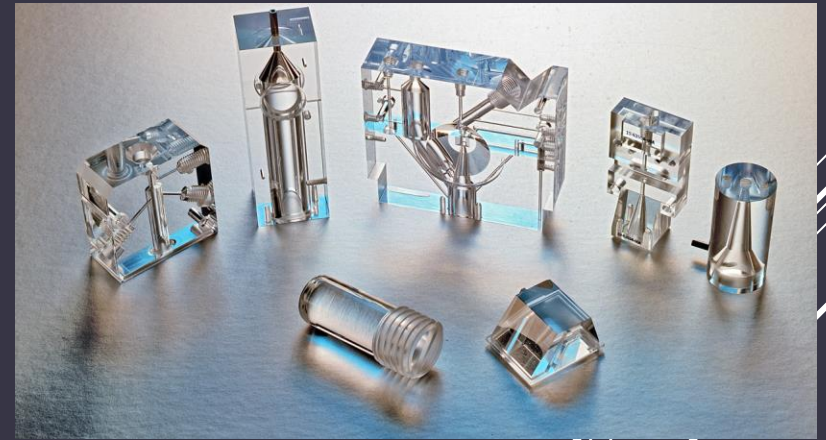
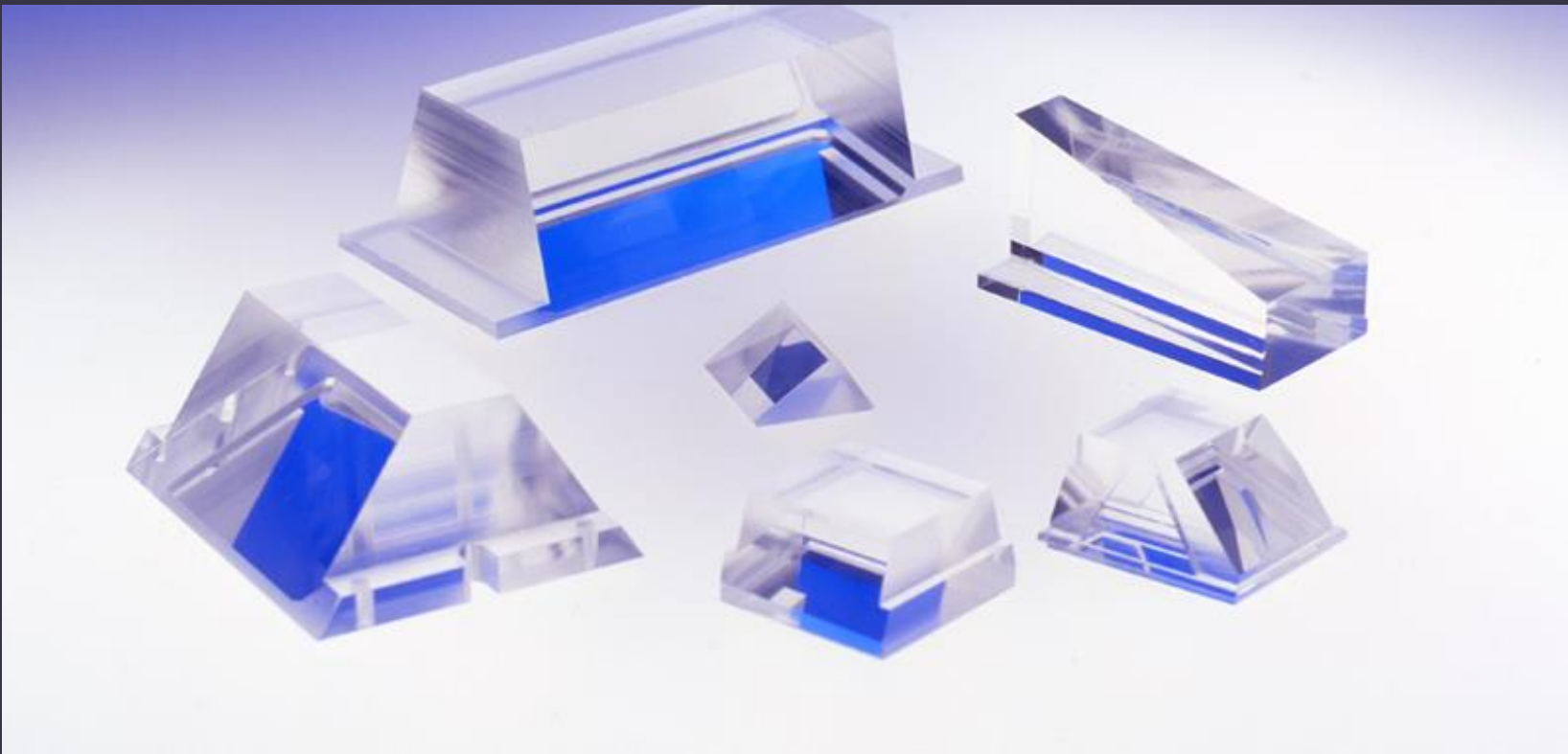
- Founded in 1976
- 62,000 sq/ft Facility Located in North San Jose
- Supporting the Semi-Conductor, BioTech, Aerospace, and Electronics Industries
- Experts in Plastic Machining, Fabrication, and Thermoforming
- ISO 9001:2015 Certified



Machining: CNC Mill and Lathe

- **20+** CNC Mills
- **4** CNC Table Routers
- **10+** CNC Lathes
- Manual Mill and Lathes
- **3 and 5** Axis Milling

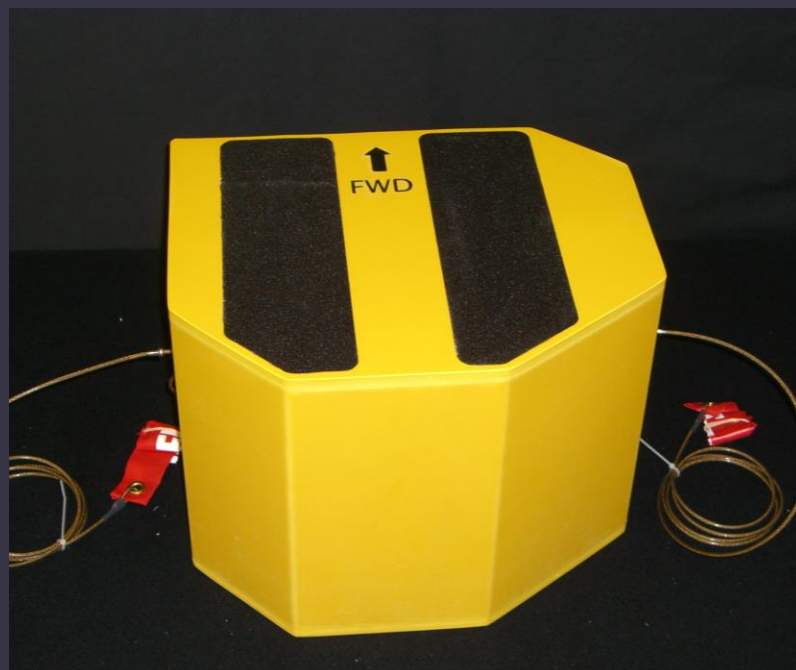




Fabrication: Bending, Bonding, Welding

- Fabricating Parts as Large as **48" x 96" x 48"**
- CNC and Conventional Routing
- Plastic Welding
- Mechanical and Chemical Bonding
- Strip Heat Bending





Thermoforming: Vacuum and Pressure Forming

- Forming Plastic Materials from **1/16"** up to **1/2"**
- Forming Parts up to **48" x 36" x 24"**
- Finish Machining, Routing, and Trimming





Looking for Employment?

Shipping and Packaging

(All Levels)

Assembly Opportunities

(Entry Level)

- Bench
- Deburr
- General Assembly

Janitorial & Shop Assistance

(Entry Level)

Machinists Opportunities

(All Levels)

- CNC Mill Machinists
- Lathe Machinists People Interested in Becoming Machinists

Quality Assurance

(All Levels)



Competitive Benefits

- Health and Dental Insurance
- 401 (k) Matching Program
- Flexible work hours
- Growth opportunities with preference given to current employees



Thank you!

CONTACT:

KYLE GODFREY

KGODFREY@MCNEAL.COM

408.468.6312

A decorative graphic consisting of several parallel white lines of varying lengths, slanted diagonally from the bottom right towards the top right, located in the lower right quadrant of the slide.



SlingShot



connectionsTM



ABOUT US

SlingShot Connections is a workforce and staffing solutions company.

The SlingShot advantage is our talent team's focus on candidate relationships. Innovative, creative recruiting and placement are our priorities. With our agents' long-time industry experience, SlingShot Connections prides itself on the ability to secure in-demand talent and expertly match it to individual company cultures.





Liliana Uribe
Business
Development
Coordinator



Jennifer Perez
Senior Talent Agent



**Samantha
Barnhill**
Talent Agent



Johanna Soto
Senior Talent Agent



Veronica Bellot
Senior Talent Agent
& Onsite Talent
Manager



**Payal
Goswami**
Talent Agent

Meet The Team



Martin Araya
Talent Agent

BENEFITS



Medical, Dental,
Vision, & Life
Insurance



6 Paid Holidays
**Based on eligibility*



Weekly Pay



Associate Referral
Program



Direct Deposit



Discount Ticket
Programs



Online Training
Classes



Paid Sick Leave





COACHING



RESUME REVIEW



LINKEDIN REVIEW



ONLINE TRAINING
& ASSESSMENT

CANDIDATE
RESOURCES



STAFFING SOLUTIONS

Contingent Staffing

Payroll Services

Direct Hire

Business Solutions

Internship Solutions

Background Checks

Skill Assessments

Connected
Conversations &
Virtual Meeting
Resources



OPENINGS:

- ASSEMBLY I & II
- MATERIAL HANDLING I, II & III
- RACK CABLE OPERATOR I & II
- Manufacturing Tech I & II
- Information Systems Project Manager
- Sr UX Engineer
- TEST OPERATORS
- REPAIR TECHNICIANS
- HOUSE KEEPING/JANITORIAL
- FRONT DESK
- OUTBOUND SALES
- SR CONTACT TRACER
- METAL DETAILERS
- CUSTOMER SERVICE REPRESENTATIVES

SHIFTS:

SET SCHEDULE MONDAY – FRIDAY WITH OVERTIME AVAILABLE

DAY: 6:45 AM – 3:15 PM

SWING: 3:45 PM – 12:15 AM

HOT JOBS



- Medical , Dental & Vision Insurance
- Life Insurance
- 401k
- Pet Insurance
- Paid Time Off
- Sick Pay
- Discounted Tickets
- Attendance Bonus
- Shelter in Place Bonus
- Over Time
- Raffles

COMPANY PERKS



Technical

- Project Manager
- Program Manager
- Analyst
- Accounting
- Entry Level AutoCAD

Warehouse

- Shipping and Receiving
- Metal Detailer
- Polisher
- Assembly
- Material Handler
- Rack Cable Operator

Hospitality

- Janitorial
- Event Setup
- Hotel Housekeeping
- Dishwashers
- Inspectors

Customer Service

- Cashier/Barista
- Inside Sales
- Technical Support
- Call Center

Administrative

- AP/AR
- Data Entry Administrative
- On Call Receptionist

APPLICATION PROCESS



Connect with Us

Email
Phone
Website
Social Media



Get Matched

Work with Talent Agent
to assess your interests
and skills
Get matched with a role
Receive interview and
resume advice for
potential interviews



Get Submitted

Our team works with
existing job openings and
clients to submit your
resume
or
Our team hunts the job
market to key skill sell
your resume



Land an Interview

Work with your Talent
Agent to compose an
interview strategy
Go through a series of
interviews
Receive job offer or
repeat the "Get
Submitted" portion



CONTACT

SlingShot Talent Agents

staff@slingshotconnections.com

Office Contact

408.247.8233



SCAN me for jobs



SCAN me for Internships



FOLLOW US



QUESTIONS & COLLABORATION



Amphenol DC Electronics, Inc.

WE ARE HIRING!



About us

Founded in 1979 by the Cianciulli Family with headquarters in San Jose, CA. ADCE (Amphenol DC Electronics) specializes in the design, engineering, and manufacturing of custom wire harnesses, cable assemblies and related subassemblies.

ADCE built a reputation of uncompromising quality, innovation and delivery excellence that is second to none. As an Amphenol company, the family foundation has been reinforced and expanded like never before.

How to apply:

Step 1



Send an email to :
HR@dcelectronics.com

Step 2



What to send to our email:

- **Subject Line:** The position your applying to and your name
Ex: Program Coordinator- Amneet Kaur
- Attach our filled **job application** along with your **resume**

Step 3



Fill out Amphenol Application!
Get invited for an interview

Career Opportunities

- ▶ Warehouse Manager (temporary)
- ▶ Engineering Manager
- ▶ Manufacturing Supervisor

- ▶ Manufacturing Assembler
- ▶ QA Inspector (Day and Swing Shift)
- ▶ Test Mating Adapter Technician
- ▶ Receiving Quality Inspector
- ▶ Receiving/Material Handler

Apply Today!

QA Inspector (Day Shift & Swing Shift)

Job Description

- Primarily Responsible for planning and directing the RMA coordination and disposition of all customer returned material.
- Coordinates activities with PM's, Quoting, Warehouse, QA, Manufacturing and shipping to ensure all returned material is received, identified, and analyzed/troubleshoot, repaired and returned to the customer in an effective and timely manner.
- Provides recommendation for corrective action for process inadequacies resulting in customers receiving noncompliant material.

Job Duties

- Coordinate initial identification and receipt of customer returns with Program Manager and customers
- Prioritize and communicate pending returns
- Ensure that returned material is properly identified and received
- Conduct failure analysis and corrective action of returned material with quoting or manufacturing
- Track and report status of incoming RMA's

Job Requirements

- 3-5 years experience in QA/RMA/DMR
- One year in electronics troubleshooting
- Knowledge of ISO 9001 or 13485 standard
- Be able to read and understand electromechanical drawings
- Analyze data & provide reports
- Focused and attention to detail
- Understanding of close Loop Corrective Action and Preventive Action processes
- Be customer driven

Test Mating Adapter Technician

Job Description

Test Mating Adapter Technician will be responsible for building test jumpers that will be used for testing the finished products. The TMAT will determine the mating interface connector. The test mating adapters will be maintained through the Preventive Maintenance program of Amphenol DC Electronics.

Job Duties

- Build test mating interface adapters
- Maintain TMAT and replace as needed
- Utilize small hand tools
- Support QA department in testing finished products
- Maintain PM using CETEC

Job Requirements

- High attention to detail
- Outstanding written and verbal communication skills

Receiving Quality Inspector (Day Shift)

Job Description

The QA Receiving Inspector Inspects all incoming parts used in the manufacturing process and either releases them for kitting or rejects them and returns to vendor.

Provides quality assurance inspections for purchased product including dimensional checks and paperwork review.

Job Duties

- Inspect all incoming parts used in the manufacturing process for correct part and for quality of individual parts
- Create inspection folder for new parts which include part specifications, a History of Receiving form and a copy of the packing slip
- If acceptable, stamp and release to production
- If unacceptable, produce an NCR form and notify purchasing department. After paperwork complete, send out to shipping

Job Requirements

- 1 year experience in Receiving Inspection
- Able to read and interpret drawings and assembly instructions
- Able to identify the difference components on the Bill of Material
- Able to read and understand manufacturers catalogues
- Properly complete all necessary documentation
- Understand ISO procedures and work instructions
- Work well independently
- Basic knowledge of computer

Receiving Clerk/Material Handler

Job Description

To be successful as a Receiving Clerk, you should be able to inspect deliveries with great attention to detail and be in good physical condition to lift and move heavy items.

Receiving clerk should be able to ensure efficient receiving processes and promptly resolve any problems or discrepancies.

Job Duties

- Properly accounting for the location of incoming goods
- Assuring no damaged items are sent or received
- Comparing purchase orders with invoices and packing slips
- Receiving and signing for deliveries
- Unloading deliveries from trucks

Job Requirements

- Previous warehouse experience
- Good at math
- Detailed oriented
- Ability to maintain accurate records
- Experience operating heavy machinery
- Ability to lift 50 pounds or more
- Good communication and organizational skills

Manufacturing Assembler

Job Description

As a Manufacturing Assembler you will maintain and service equipment, troubleshoot equipment malfunctions, ensure quality control, maintain supply inventory, record actions on production forms and communicate with other stations on the assembly line to ensure accuracy, speed and efficiency.

Job Duties

- Prepare and position parts for assembly ensuring each component is fastened together correctly
- Check connections and log discrepancies
- Read measurements and verify specifications
- Measure completed components and assemble parts to approved specifications

Job Requirements

- Good hand dexterity
- Basic Math Skills
- Ability to read and understand blueprints or manuals
- Strong mechanical and technical skills
- Stamina to be on your feet/or sitting for prolonged hours, and strength to lift heavy parts for assembly
- Must be able to identify, different colored wires, tabs and components

Engineering Manager

Job Description

The Manufacturing Engineer develops and improves manufacturing processes by studying product and manufacturing methods.

Job Duties

- Evaluates manufacturing processes by designing and conducting research programs; applying knowledge of product design, fabrication, assembly, tooling, and materials; conferring with equipment vendors; soliciting observations from operators
- Develops manufacturing processes by studying product requirements; researching, designing, modifying, and testing manufacturing methods and equipment; conferring with equipment vendors.
- Improves manufacturing efficiency by analyzing and planning workflow, space requirements, and equipment layout.
- Improves manufacturing efficiency by analyzing and planning workflow, space requirements, and equipment layout
- Completes design and development projects by training and guiding technicians

Job Requirements

- Dealing with Complexity
- Leadership skills
- Manufacturing Methods and Procedures
- Manufacturing Quality
- Product Development
- Presenting Technical Information
- CAD
- CAD/CAM Circuit Design

COVID19 Safety Precautions

- ▶ Amphenol DC Electronics is compliant with safety and health standards and regulations, and we are taking all necessary precautions to prevent the spread of COVID19 by doing the following
 - Temperature check upon entry
 - Face covering requirement at all times
 - Sneeze guards between workstations
 - Hand sanitizer dispensers at every door entrance/exits
 - Maintain regular housekeeping practices, including routine cleaning and disinfecting of surfaces, equipment, and other elements of the work environment
 - Promote frequent and thorough hand washing
 - Encourage workers to stay home if they are sick.
 - Encourage respiratory etiquette, including covering coughs and sneezes

Questions?



Thank you



work2futureSM
opportunity • jobs • success

SJCC & Work2Future Virtual Job Fair (Spring 2021)

Thank you for coming!
We hope you remain
safe and continue to
be in good health
standing!



Virtual
CAREER
FAIR



SANJOSECITYCOLLEGE
SJCC

Work2Future:

Camdyn Carter

camdyn.carter@equusworks.com

Kimberly Reddrick-Peters

kimberly.peters@equusworks.com

Huong Tran

Huong.A.Tran@sanjoseca.gov

San Jose City College:

Christiaan Desmond

Christiaan.Desmond@sjcc.edu

Steven Lee

Steven.Lee@sjcc.edu